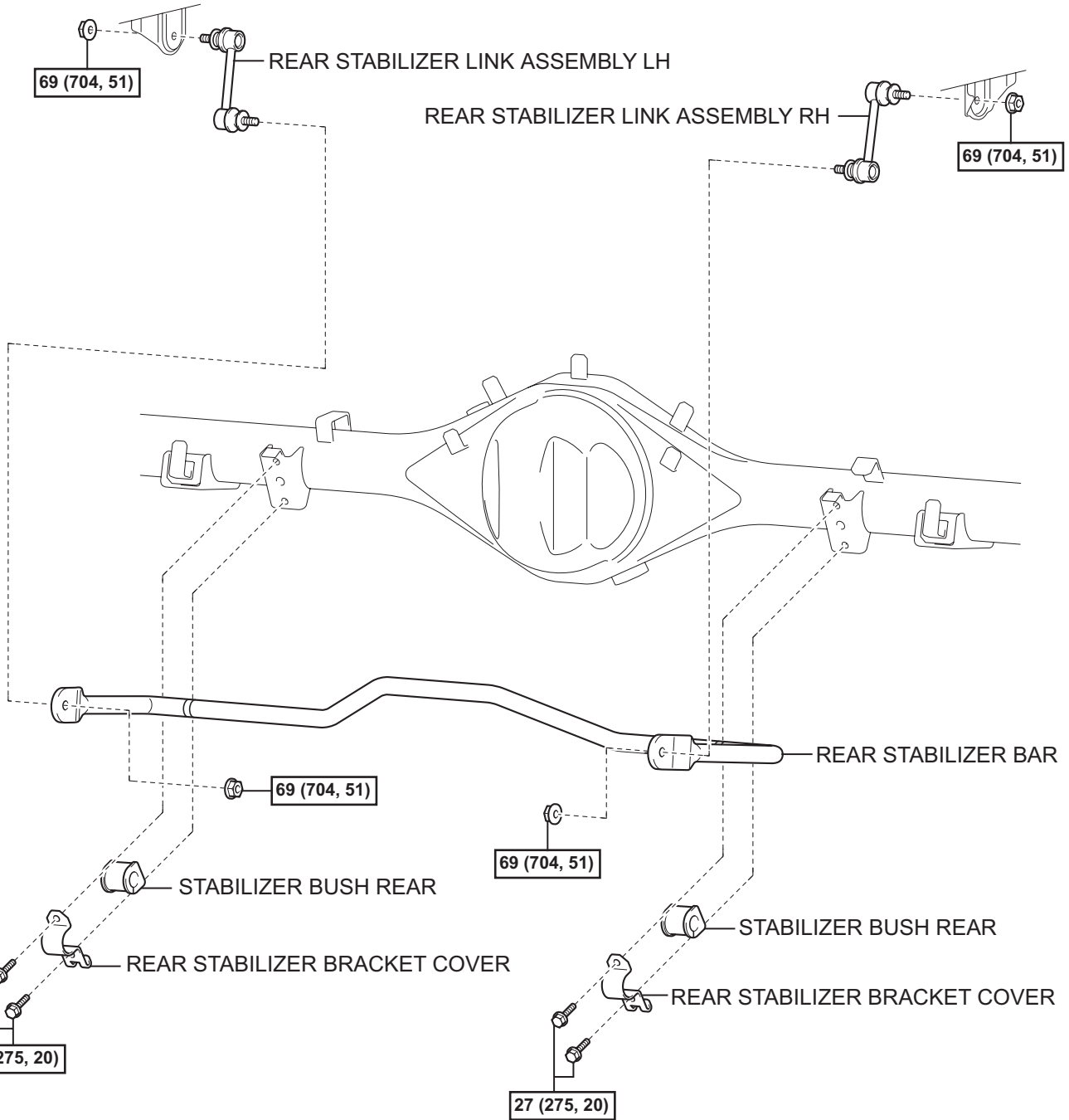


REAR STABILIZER BAR (for Sport Suspension Package)

COMPONENTS

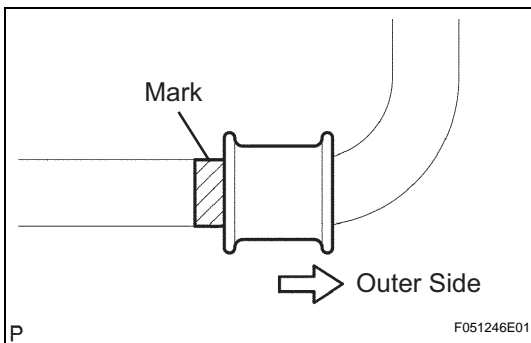
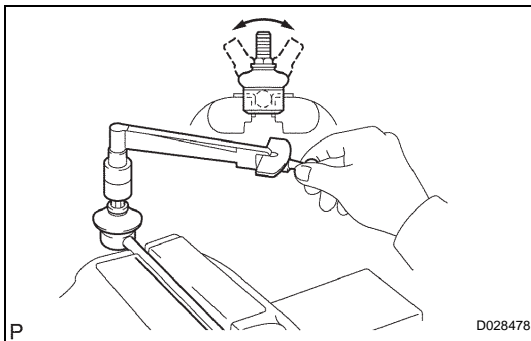
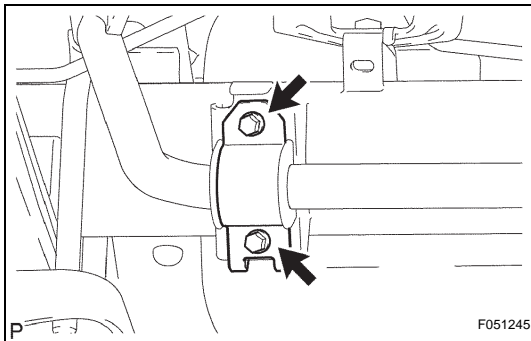
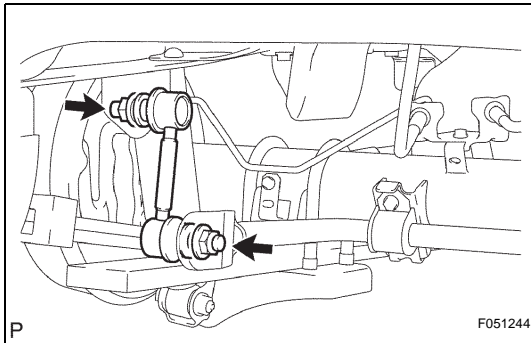


SP

N*m (kgf*cm, ft.*lbf) : Specified torque

REMOVAL

1. **REMOVE REAR WHEEL**
2. **REMOVE REAR STABILIZER LINK ASSEMBLY LH**
 - (a) Remove the 2 nuts and stabilizer link (LH side).
HINT:
If the ball joint turns together with the nut, use a hexagon wrench (6 mm) to hold the stud.
3. **REMOVE REAR STABILIZER LINK ASSEMBLY RH**
HINT:
The removal procedure for the RH side is the same as that for the LH side.
4. **REMOVE REAR STABILIZER BAR**
 - (a) Remove the 4 bolts, 2 stabilizer brackets and stabilizer bar.
 - (b) Remove the 2 stabilizer bushes from the stabilizer bar.

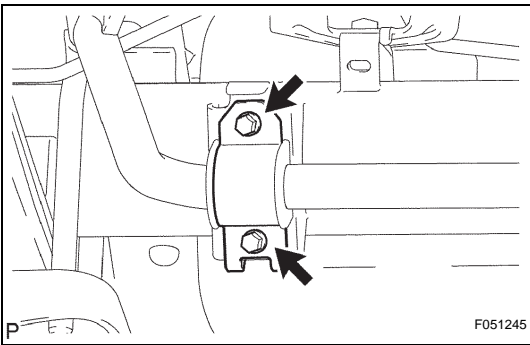


INSPECTION

1. **INSPECT REAR STABILIZER LINK ASSEMBLY**
 - (a) Flip the ball joint back and forth 5 times, as shown in the illustration, before installing the nut.
 - (b) Using a torque wrench, turn the nut continuously at a rate of 3 to 5 seconds per turn, and take the torque reading on the 5th turn.
Torque: 2.0 N*m (20 kgf*cm, 18 in.*lbf) or less
 - (c) Check for any cracks and grease leakage on the ball joint dust cover.

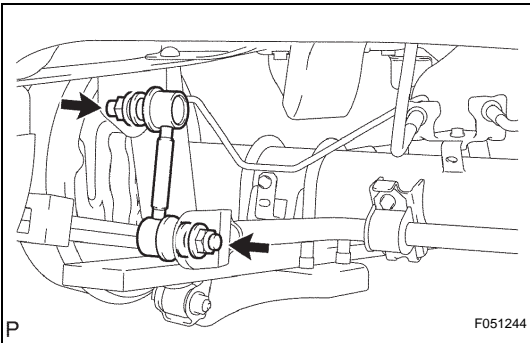
INSTALLATION

1. **INSTALL REAR STABILIZER BAR**
 - (a) Install the 2 stabilizer bushes onto the stabilizer bar.
HINT:
Install the stabilizer bush onto the outer side of the mark on the stabilizer bar.



- (b) Install the stabilizer bar and 2 stabilizer brackets with the 4 bolts.

Torque: 27 N*m (275 kgf*cm, 20 ft.*lbf)



2. INSTALL REAR STABILIZER LINK ASSEMBLY LH

- (a) Install the stabilizer link with the 2 nuts.

Torque: 69 N*m (704 kgf*cm, 51 ft.*lbf)

HINT:

If the ball joint turns together with the nut, use a hexagon wrench (6 mm) to hold the stud.

3. INSTALL REAR STABILIZER LINK ASSEMBLY RH
NOTICE:

The installation procedure for the RH side is the same as that for the LH side.

4. INSTALL REAR WHEEL

Torque: 113 N*m (1,152 kgf*cm, 83 ft.*lbf)